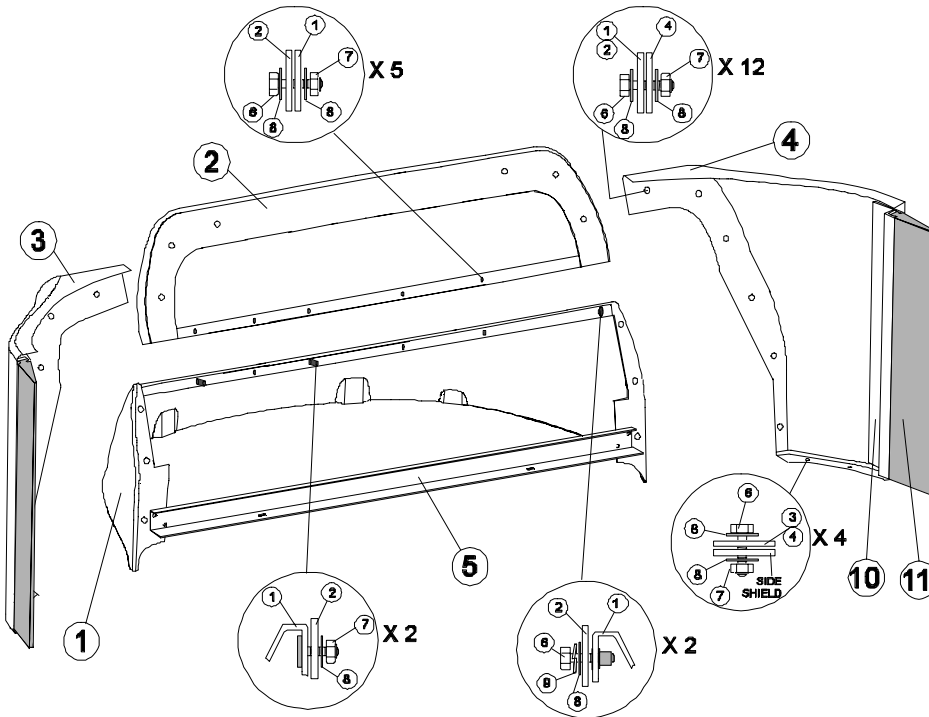


LCL DEALER INSTALLATION INSTRUCTIONS - AIR FAIRING #IN AF 290

TRUCK MANUFACTURER:
VEHICLE TYPE:
SLEEPER/CAB SIZE:

NAVISTAR
CONVENTIONAL
9100 DAYCAB



PARTS LISTING

| ITEM. NO: | DESCRIPTION | PART # | QTY |
|-----------|----------------------------|----------------------|-----|
| 1 | FAIRING BOTTOM | IN FB 200 | 1 |
| 2 | FAIRING UPPER | IN FT 200 | 1 |
| 3 | LEFT TRIM TAB | IN TL 295 (OPTIONAL) | 1 |
| 4 | RIGHT TRIM TAB | IN TR 295 (OPTIONAL) | 1 |
| 5 | CROSS BAR | IN BB 380 | 1 |
| 6 | BOLT M8 x 25, SS | SC 201 | 23 |
| 7 | LOCKNUT M8, SS | NU 201 | 23 |
| 8 | FENDER WASHER 8mm I.D., SS | WA 201 | 46 |
| 9 | LOCK WASHER, 8mm I.D., SS | WA 205 | 2 |
| 10 | Aluminum Extender Holder | | 2 |
| 11 | RUBBER EXTENDER | 1655084C1 | 2 |

RECOMMENDED TORQUE SPECS

| BOLT SIZE | TORQUE [ft.lbs] | |
|-------------|-----------------|-----|
| | MIN | MAX |
| 1/4" BOLTS | 10 | 15 |
| 5/16" BOLTS | 20 | 25 |
| M8 BOLTS | 20 | 25 |
| 3/8" BOLTS | 30 | 35 |

ORDERING AND CUSTOMER SUPPORT:

Laydon Composites Ltd.
2109 WYECROFT RD.
Oakville, ON, L6L 5L7
Canada

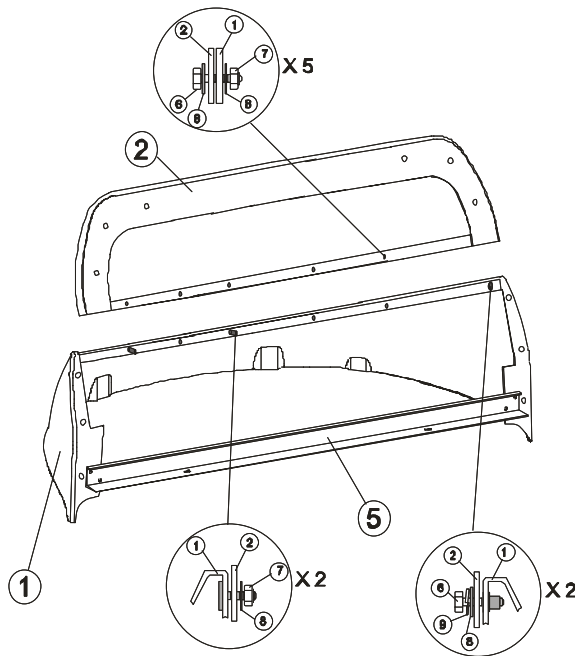
TEL: 905-829-9200
FAX: 905-829-9701

LCL DEALER INSTALLATION INSTRUCTIONS - IN AF 290

1. Remove trim tabs and packaging from fairing assembly. Remove M8 locknuts, washers and packaged fasteners from stud plates located at the front of the lower/upper fairing assembly. Remove both M8 bolts from the rear corners of the lower/upper fairing assembly.
2. Remove the upper fairing from the lower fairing. Invert the upper fairing and assemble the two 3/8" slotted holes onto the two stud plates located near the center of the lower fairing. Adjust the upper fairing until the two rear most holes line up with the two rivnuts of the lower fairing. Refasten one M8x25, 8mm lockwasher and 8mm fender washer to each rivnut.

NOTE: DO NOT TIGHTEN ANY FASTENERS UNTIL ALL ATTACHMENTS HAVE BEEN MADE

3. Refasten M8 locknuts and 8mm fender washers to the two stud plates as shown below
4. Fasten M8x25 bolts, 8mm fender washers and M8 locknuts to the five remaining mounting holes in the lower fairing as shown below.



PARTS LISTING

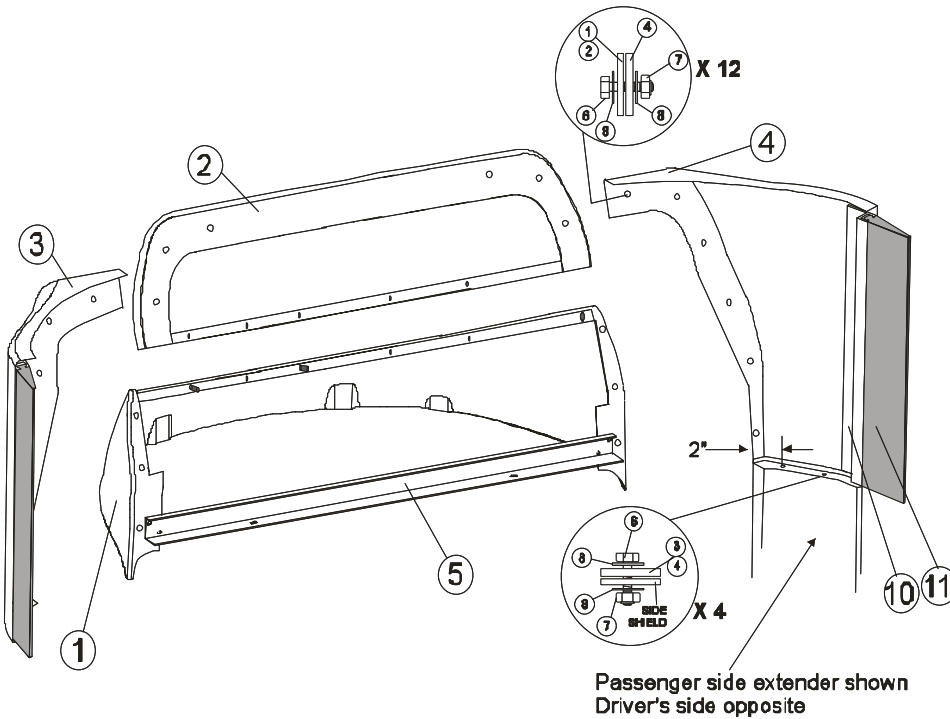
| ITEM. NO: | DESCRIPTION | PART # | QTY |
|-----------|----------------------------|-----------|-----|
| 1 | FAIRING BOTTOM | IN FB 200 | 1 |
| 2 | FAIRING UPPER | IN FT 200 | 1 |
| 5 | CROSS BAR | IN BB 380 | 1 |
| 6 | BOLT M8 x 25, SS | SC 201 | 7 |
| 7 | LOCKNUT M8, SS | NU 201 | 7 |
| 8 | FENDER WASHER 8mm I.D., SS | WA 201 | 14 |
| 9 | LOCK WASHER, 8mm I.D., SS | WA 205 | 2 |

RECOMMENDED TORQUE SPECS

| BOLT SIZE | TORQUE [ft.lbs] | |
|-------------|-----------------|-----|
| | MIN | MAX |
| 1/4" BOLTS | 10 | 15 |
| 5/16" BOLTS | 20 | 25 |
| M8 BOLTS | 20 | 25 |
| 3/8" BOLTS | 30 | 35 |

LCL DEALER INSTALLATION INSTRUCTIONS - IN AF 290

5. Fasten each trim tab to the upper and lower fairing mounting holes using M8x25 bolts, 8mm fender washers and M8 locknuts as shown below.
6. Position and clamp each trim tab to its corresponding side shield. Drill a 5/16" hole thru the Trim tab and side shield, 2.00" from the inner and outer edges.
7. Fasten side shields to trim tabs using M8x25 bolts, 8mm fender washers and M8 locknuts, as shown.
8. Tighten trim tabs to upper/lower fairing bolts first. Tighten trim tabs to side shields. Tighten upper to lower assembly. If gaps develop loosen fasteners and readjust components (holes are elongated for this purpose), then retighten.
9. Tighten all connections to the proper torque.
10. Slide rubber extender onto aluminum extender holder until it rests against the lower side extender.



PARTS LISTING

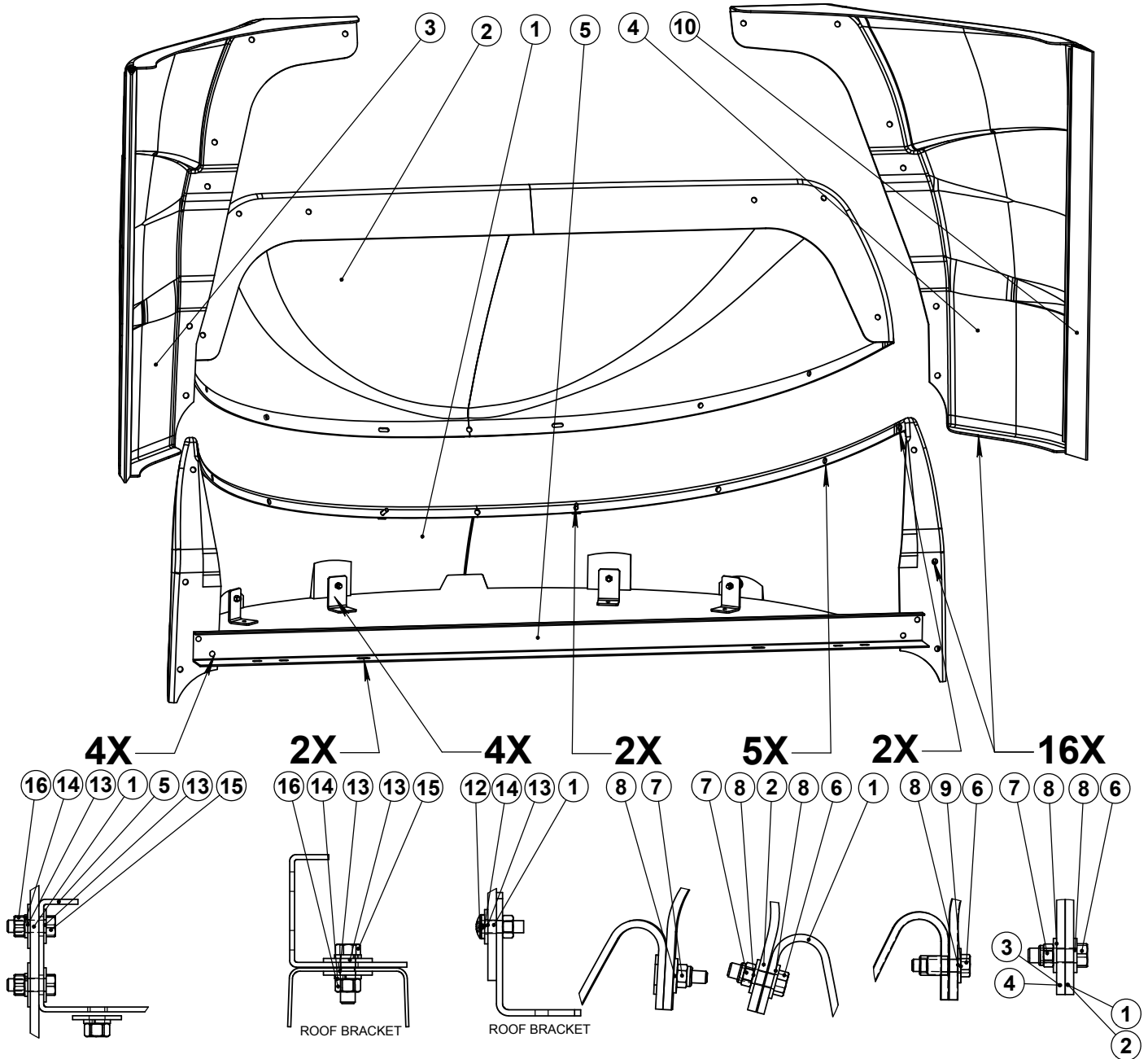
| ITEM. NO: | DESCRIPTION | PART # | QTY |
|-----------|----------------------------|-------------|-----|
| 1 | FAIRING BOTTOM | IN FB 200 | 1 |
| 2 | FAIRING UPPER | IN FT 200 | 1 |
| 3 | LEFT TRIM TAB | IN TL 295 (| 1 |
| 4 | RIGHT TRIM TAB | IN TR 295 (| 1 |
| 5 | CROSS BAR | IN BB 380 | 1 |
| 6 | BOLT M8 x 25, SS | LD 9140 | 16 |
| 7 | LOCKNUT M8, SS | LD 9145 | 16 |
| 8 | FENDER WASHER 8mm I.D., SS | LD 9150 | 32 |
| 10 | Aluminum extender holder | | 2 |
| 11 | RUBBER EXTENDER | 1655084C1 | 2 |

RECOMMENDED TORQUE SPECS

| BOLT SIZE | TORQUE [ft.lbs] | |
|-------------|-----------------|-----|
| | MIN | MAX |
| 1/4" BOLTS | 10 | 15 |
| 5/16" BOLTS | 20 | 25 |
| M8 BOLTS | 20 | 25 |
| 3/8" BOLTS | 30 | 35 |



INSTALLATION PARTS LISTING - AIR FAIRING (NAVISTAR CONVENTIONAL 9100 DAY CAB)



PART LISTING

RECOMMENDED TORQUE SPECS

| BOLT SIZE | TORQUE (FT./LBS) | |
|-----------|------------------|-----|
| | MIN | MAX |
| M8 | 20 | 25 |
| 3/8 BOLTS | 30 | 35 |

| ITEM# | PART # | QTY. | DESCRIPTION |
|-------|-----------|------|--------------------------------------|
| 1 | IN FB 290 | 1 | FAIRING BOTTOM |
| 2 | IN FT 200 | 1 | FAIRING UPPER |
| 3 | IN TL 295 | 1 | LEFT TRIM TAB (OPTIONAL) |
| 4 | IN TR 295 | 1 | RIGHT TRIM TAB (OPTIONAL) |
| 5 | IN BB 300 | 1 | CROSS BAR |
| 6 | SC 201 | 23 | HEX CAP SCREW M8X1.25X25mm SS |
| 7 | NU201 | 23 | LOCKNUT M8, SS |
| 8 | WA 201 | 46 | FENDER WASHER 8mm I.D. SS |
| 9 | WA 205 | 2 | WASHER LOCK 8 MM ID SS |
| 10 | IN BR 390 | 2 | RUBBER EXTENDER (SUPPLIED BY WAYCON) |
| 12 | SC 206 | 4 | BOLT BUTTON HEAD 3/8-16 X 1 1/2 SS |
| 13 | WA 206 | 16 | WASHER 3/8 I.D. FLAT TYPE SS |
| 14 | WA 207 | 10 | WASHER 3/8 I.D. SPLIT LOCK SS |
| 15 | SC 207 | 6 | HEX BOLT 3/8-16X1 SS |
| 16 | NU 202 | 6 | NUT 3/8-16 SS |



Laydon Composites Ltd.
2109 Wyecroft Rd.
Oakville, ON, L6L 5L7
CANADA

Tel: (905)829-9200
Fax: (905)829-9701