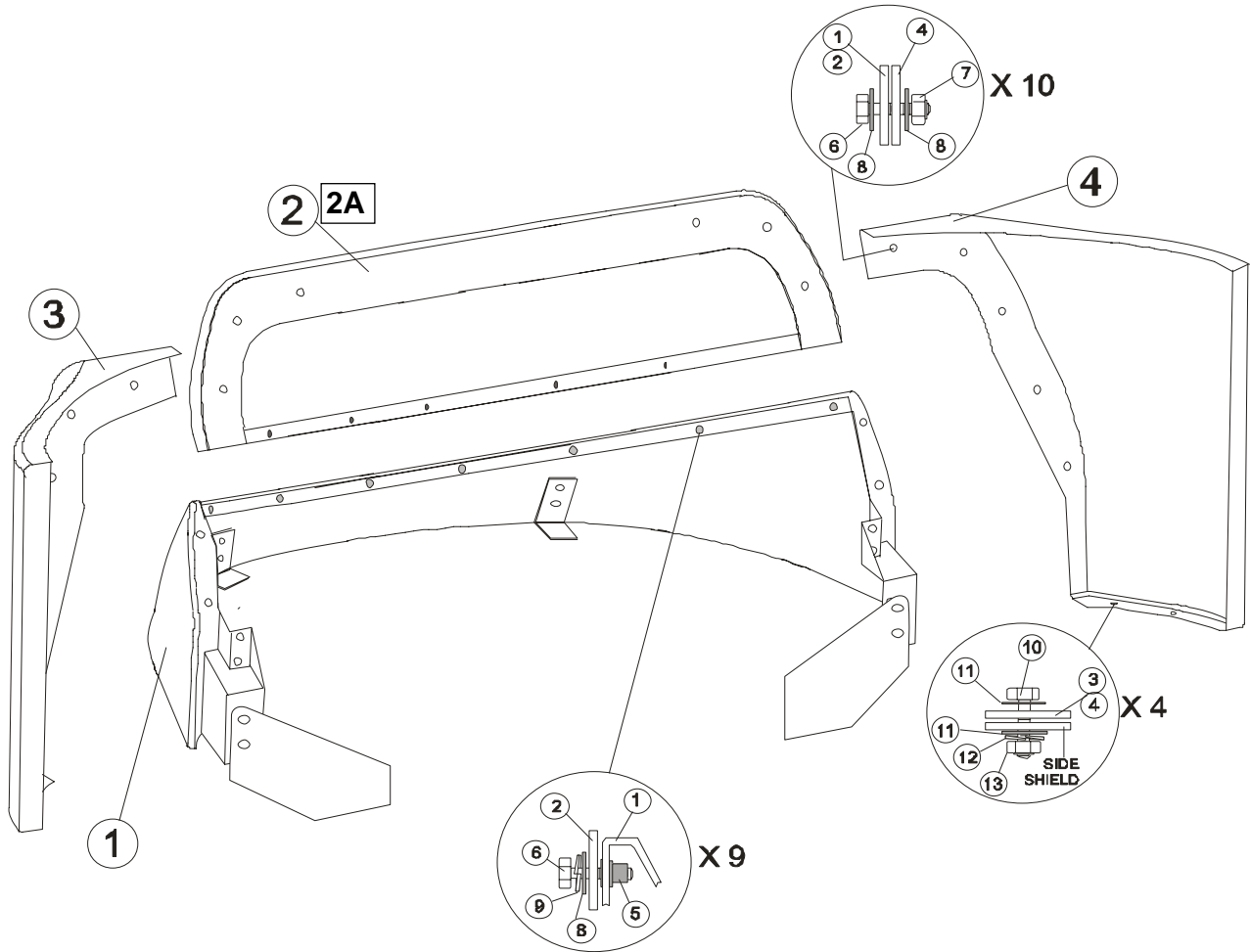


DEALER INSTALLATION INSTRUCTIONS - AIR FAIRING #LD 50024

TRUCK MANUFACTURER: FREIGHTLINER
 VEHICLE TYPE: CONVENTIONAL
 SLEEPER/CAB SIZE: CENTURY CLASS DAY CAB NON SLEEPER



PARTS LISTING

ITEM. NO:	DESCRIPTION	PART #	SHORT UNIT	LONG UNIT
			QTY	QTY
1	FAIRING LOWER	FL FB 200	1	1
2	FAIRING UPPER	FL FT 200	1	1
2A	FAIRING UPPER W/ GPS MOUNT	FLFT200GPS	1	1
3	LEFT TRIM TAB	FL TL 205		1
4	RIGHT TRIM TAB	FL TR 205		1
5	AVK M8 RIVENUT	RN 201	9	9
6	BOLT M8 x 25, SS	SC 201	9	19
7	LOCKNUT M8, SS	NU 201	0	10
8	FENDER WASHER 8mm I.D., SS	WA 201	9	29
9	LOCK WASHER, 8mm I.D., SS	WA 205	9	9
10	SS BOLT, 1/4-20 x 1-1/4 HEX TYPE	SC 208	0	4
11	SS WASHER, 1/4 FLAT TYPE	WA 208	0	8
12	SS WASHER, 1/4 SPLIT LOCK TYPE	WA 209	0	4
13	SS NUT 1/4-20 HEX TYPE	NU 203	0	4

RECOMMENDED TORQUE SPECS

BOLT SIZE	TORQUE [ft.lbs]	
	MIN	MAX
1/4" BOLTS	10	15
5/16" BOLTS	20	25
M8 BOLTS	20	25
3/8" BOLTS	30	35

NOTE: 1.0 Item # 2A is optional GPS mount upper fairing

ORDERING AND CUSTOMER SUPPORT:

Laydon Composites Ltd. TEL: 905-829-9200
 2109 Wycroft Road FAX: 905-829-9701
 Oakville, ON, L6L 5L7
 Canada

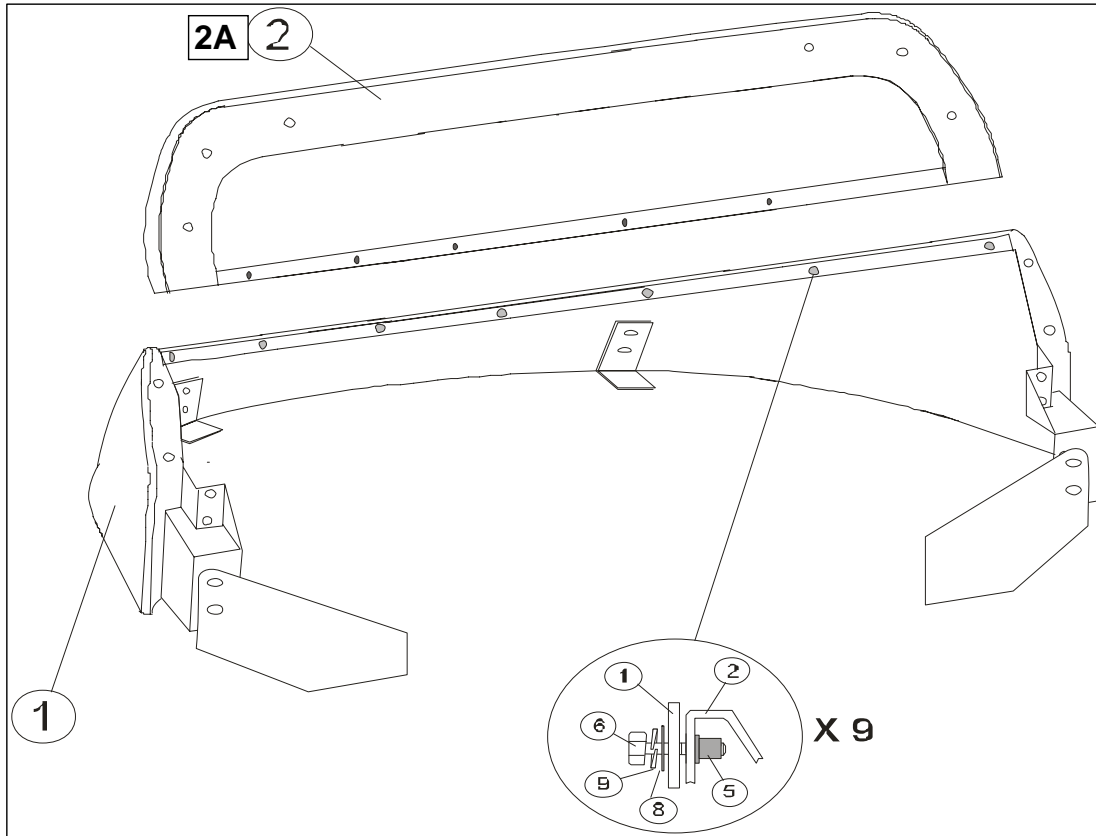
FLPA 521

DEALER INSTALLATION INSTRUCTIONS - LD50024

1. Remove trim tabs and packaging from fairing assembly. Remove M8 locknuts, washers and packaged fasteners from rivnuts located at the front of the lower/upper fairing assembly. Remove both 5/16" bolts from the rear corners of the lower/upper fairing assembly.
2. Remove the upper fairing from the lower fairing. Remove the M8 bolts and 1x4 lumber from the rear corner of the lower fairing.
3. Invert the upper fairing and assemble the centre hole onto the centre AVK rivnut in the lower fairing using M8x1.25x25mm bolt, lock washer and fender washer.
4. Adjust the upper fairing until the two rear most holes line up with the two rivnuts of the lower fairing. Fasten one M8x25, 8mm lock-washer and 8mm fender washer to each rivnut.

NOTE: DO NOT TIGHTEN ANY FASTENERS UNTIL ALL ATTACHMENTS HAVE BEEN MADE

5. Fasten M8x25 bolts, 8mm fender washers and M8 locknuts to the six remaining mounting holes in the lower fairing as shown below.



PARTS LISTING

ITEM. NO:	DESCRIPTION	PART #	QTY
1	FAIRING LOWER	FL FB 200	1
2	FAIRING UPPER	FL FT 200	1
2A	FAIRING UPPER W/ GPS MOUNT	FLFT200GPS	1
5	AVK M8 RIVNUT	RN 201	9
6	BOLT M8 x 25, SS	SC 201	9
8	FENDER WASHER 8mm I.D., SS	WA 201	9
9	LOCK WASHER, 8mm I.D., SS	WA 205	9

RECOMMENDED TORQUE SPECS

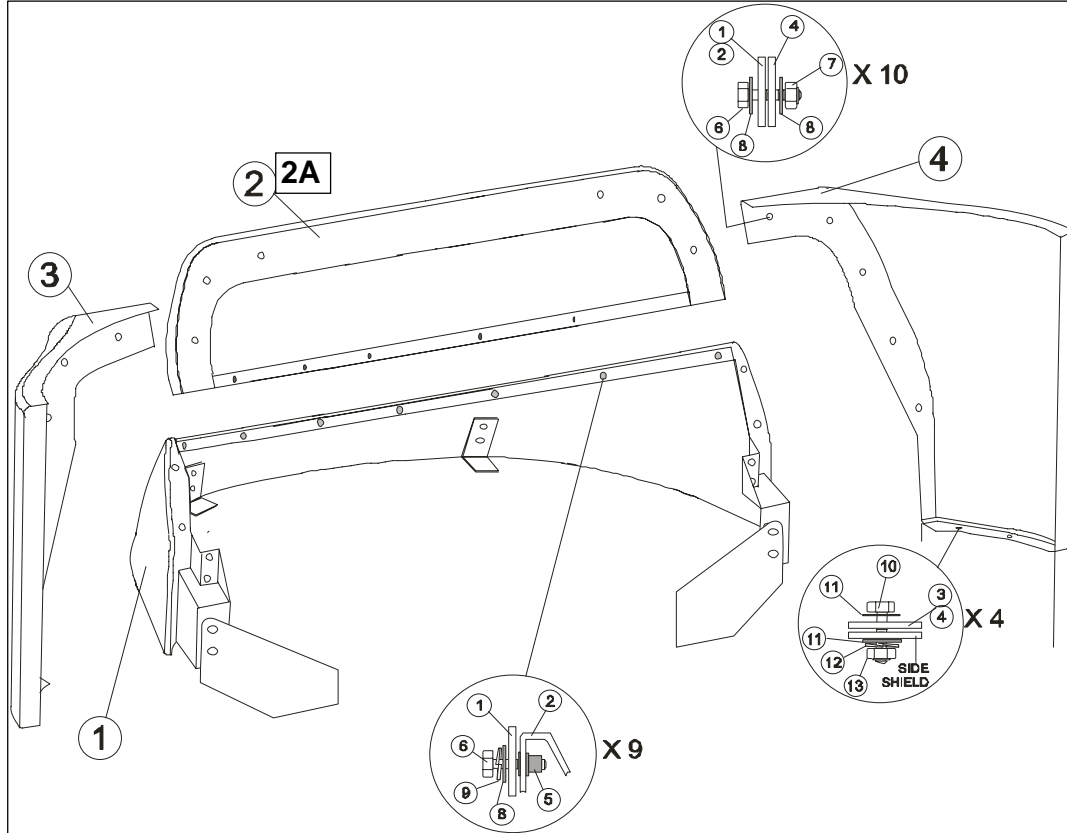
BOLT SIZE	TORQUE [ft.lbs]	
	MIN	MAX
1/4" BOLTS	10	15
5/16" BOLTS	20	25
M8 BOLTS	20	25
3/8" BOLTS	30	35

NOTE: 1.0 Item # 2A is optional GPS mount upper fairing

FLPA 521

DEALER INSTALLATION INSTRUCTIONS - LD50024

6. Fasten each trim tab to the upper and lower fairing mounting holes using M8x25 bolts, 8mm fender washers and M8 locknuts as shown below.
7. Position and clamp each trim tab to its corresponding side shield. Drill a 9/32" hole thru the Trim tab and side shield, using the existing holes in the side shield as a guide. If no holes exist, then 2.00" from the inner and outer edges.
8. Fasten side shields to trim tabs using 1/4-20x1-1/4 bolts, 1/4" fender washers, 1/4" lock washers and 1/4-20 nuts, as shown.
9. Tighten trim tabs to upper/lower fairing bolts first. Tighten trim tabs to side shields. Tighten upper to lower assembly. If gaps develop loosen fasteners and readjust components (holes are elongated for this purpose), then retighten.
10. Tighten all connections to the proper torque.



PARTS LISTING

RECOMMENDED TORQUE SPECS

ITEM. NO:	DESCRIPTION	PART #	SHORT UNIT	LONG UNIT
			QTY	QTY
1	FAIRING LOWER	FL FB 200	1	1
2	FAIRING UPPER	FL FT 200	1	1
2A	FAIRING UPPER W/ GPS MOUNT	FLFT200GP	1	1
3	LEFT TRIM TAB	FL TL 205		1
4	RIGHT TRIM TAB	FL TR 205		1
5	AVK M8 RIVNUT	RN 201	9	9
6	BOLT M8 x 25, SS	SC 201	9	19
7	LOCKNUT M8, SS	NU 201	0	10
8	FENDER WASHER 8mm I.D., SS	WA 201	9	29
9	LOCK WASHER, 8mm I.D., SS	WA 205	9	9
10	SS BOLT, 1/4-20 x 1-1/4 HEX TYPE	SC 208	0	4
11	SS WASHER, 1/4 FLAT TYPE	WA 208	0	8
12	SS WASHER, 1/4 SPLIT LOCK TYPE	WA 209	0	4
13	SS NUT 1/4-20 HEX TYPE	NU 203	0	4

BOLT SIZE	TORQUE [ft.lbs]	
	MIN	MAX
1/4" BOLTS	10	15
5/16" BOLTS	20	25
M8 BOLTS	20	25
3/8" BOLTS	30	35

NOTE: 1.0 Item # 2A is optional GPS mount upper fairing

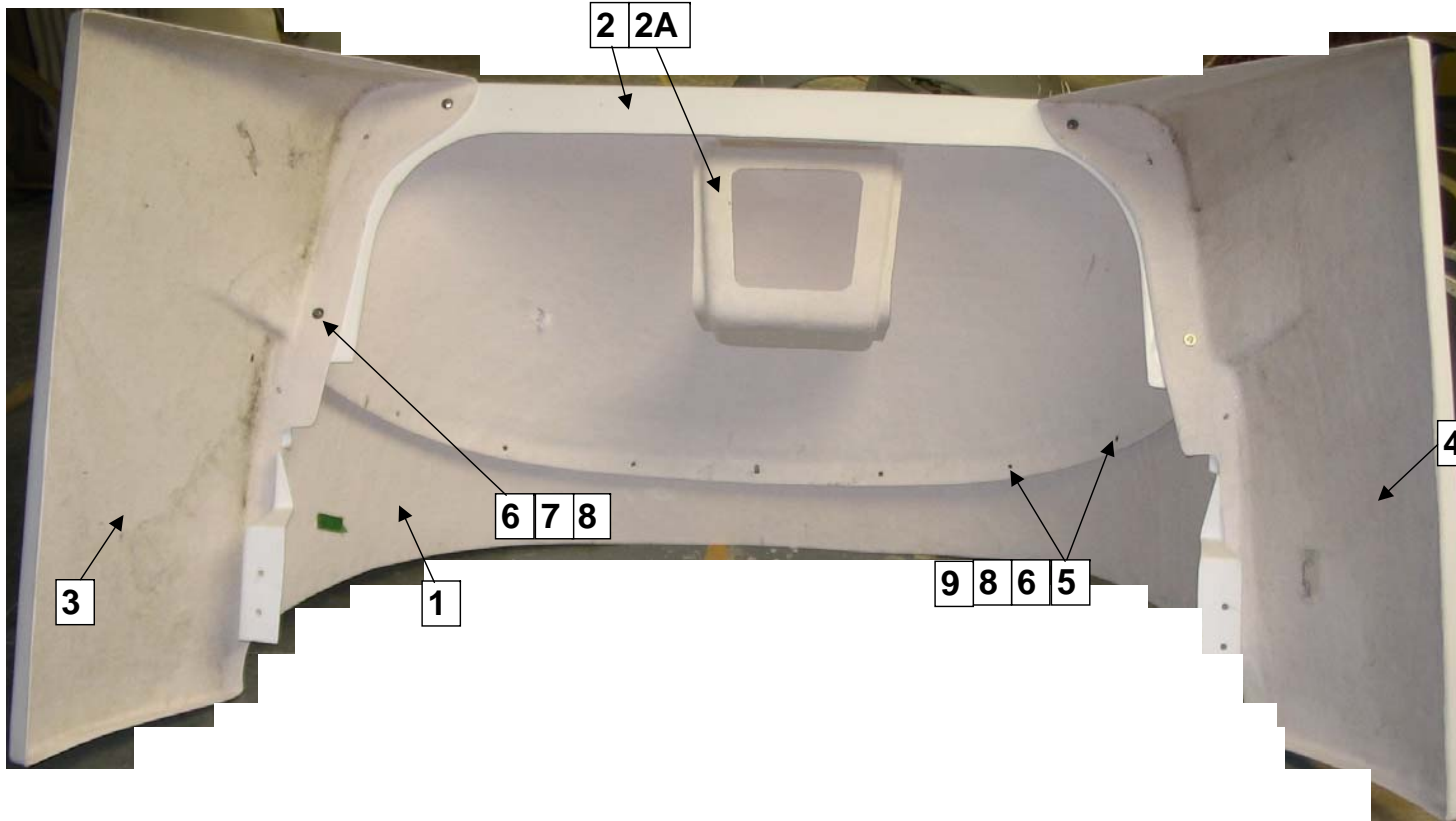
ORDERING AND CUSTOMER SUPPORT:

Laydon Composites Ltd.
2109 Wyecroft Road
Oakville, ON, L6L 5L7
Canada

TEL: 905-829-9200
FAX: 905-829-9701

FLPA 521

LD 50024 CENTURY Identification Sheet



PARTS LISTING

ITEM. NO:	DESCRIPTION	PART #	SHORT UNIT	LONG UNIT
			QTY	QTY
1	FAIRING LOWER	FL FB 200	1	1
2	FAIRING UPPER	FL FT 200	1	1
2A	FAIRING UPPER W/ GPS MOUNT	FLFT200GPS	1	1
3	LEFT TRIM TAB	FL TL 205		1
4	RIGHT TRIM TAB	FL TR 205		1
5	AVK M8 RIVNUT	RN 201	9	9
6	BOLT M8 x 25, SS	SC 201	9	19
7	LOCKNUT M8, SS	NU 201	0	10
8	FENDER WASHER 8mm I.D., SS	WA 201	9	29
9	LOCK WASHER, 8mm I.D., SS	WA 205	9	9

RECOMMENDED TORQUE SPECS

BOLT SIZE	TORQUE [ft.lbs]	
	MIN	MAX
1/4" BOLTS	10	15
5/16" BOLTS	20	25
M8 BOLTS	20	25
3/8" BOLTS	30	35

NOTE: 1.0 Item # 2A is optional GPS mount upper fairing

ORDERING AND CUSTOMER SUPPORT:

Laydon Composites Ltd.
2109 Wycroft Road
Oakville, ON, L6L 5L7
Canada

TEL: 905-829-9200
FAX: 905-829-9701