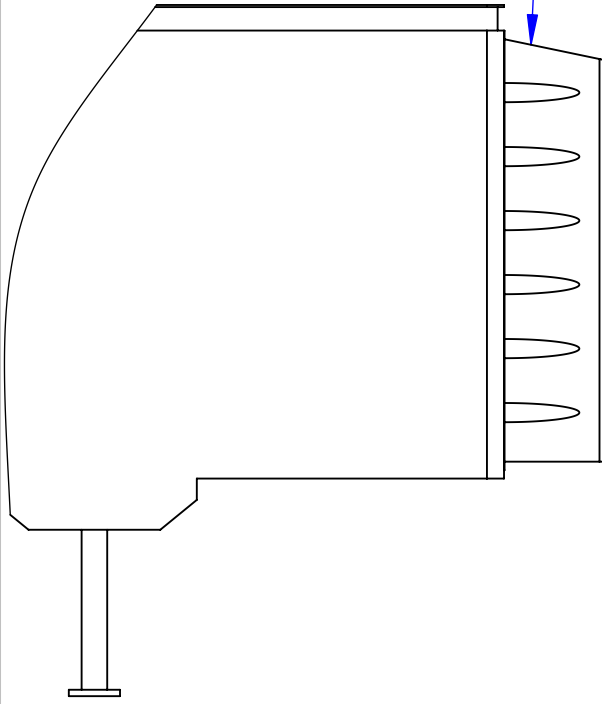


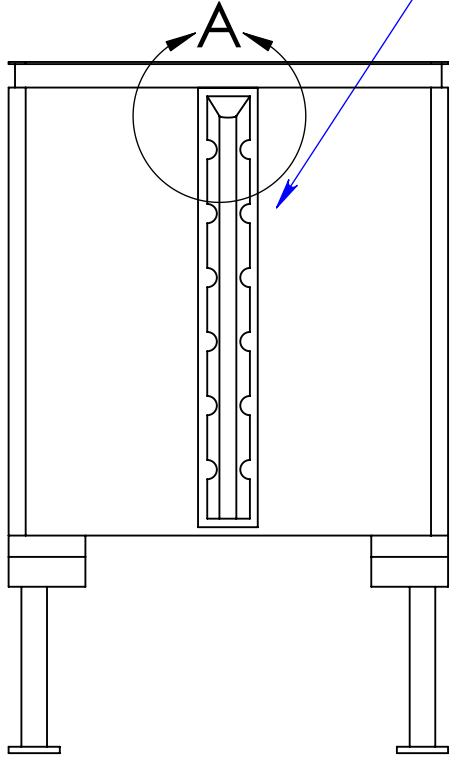
REV	DATE	ENG APPR.	DESCRIPTION

Installer le Tourbillon avec la plus grande fin inclinée le plus comme possible au sommet de caravane.

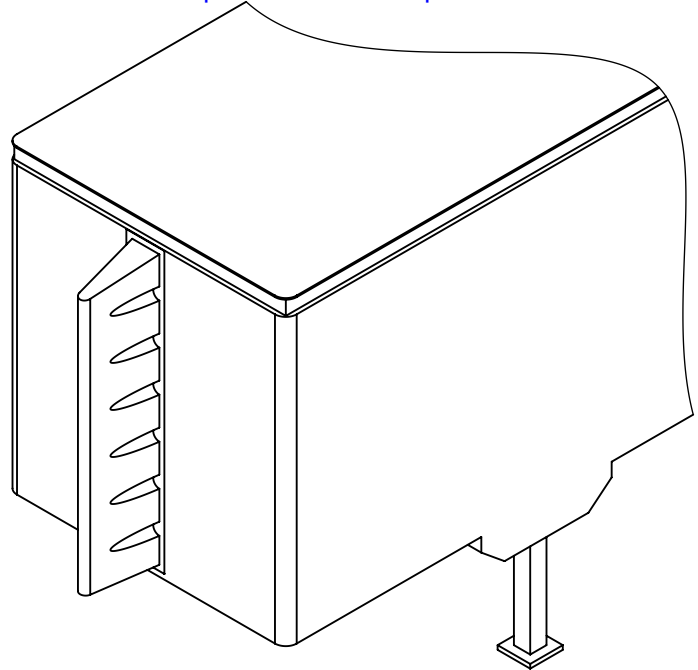
Installer le Tourbillon à la visage de devant de Caravane. Le Tourbillon de centre le plus comme possible.



La VUE de Côté de Caravane



La Vue de Devant de Caravane



ISO VUE

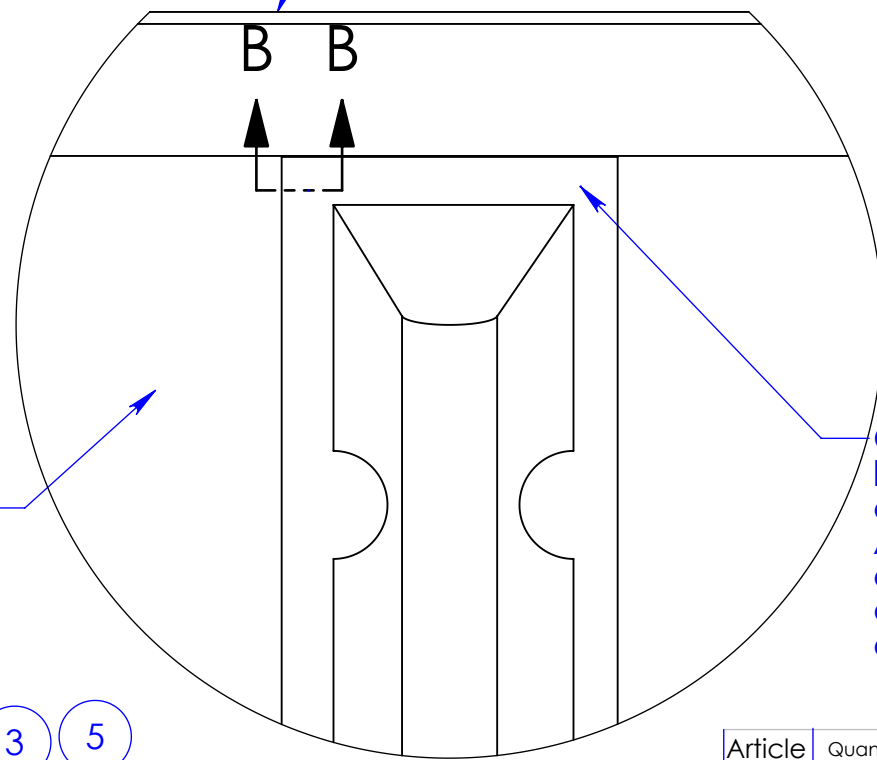
UNLESS OTHERWISE SPECIFIED:	NAME	DATE
DIMENSIONS ARE IN INCHES	DRAWN	J HAWS 1/12/07
TOLERANCES:	CHECKED	J HAWS 1/12/07
FRACTIONAL ±	ENG APPR.	
ANGULAR: MACH ±0.5 BEND ±	MFG APPR.	
TWO PLACE DECIMAL ±0.01	Q.A.	
THREE PLACE DECIMAL ±0.003	COMMENTS:	BREAK SHARP EDGES 0.02X45 Deg.
INTERPRET GEOMETRIC TOLERANCING PER:		
MATERIAL		
FINISH		
DO NOT SCALE DRAWING		

PROPRIETARY AND CONFIDENTIAL
 THE INFORMATION CONTAINED IN THIS DRAWING IS THE SOLE PROPERTY OF LAYDON COMPOSITES LTD. ANY REPRODUCTION IN PART OR AS A WHOLE WITHOUT THE PRIOR WRITTEN PERMISSION OF LAYDON COMPOSITES LTD. IS PROHIBITED.

Titre:		
L'Assemblée de Caravane de Stabilisateur de Tourbillon		
SIZE	DWG. NO.	REV
A	LCL 9102-103-002-F	0
ECHELLE: 1:75	PAGE 1	

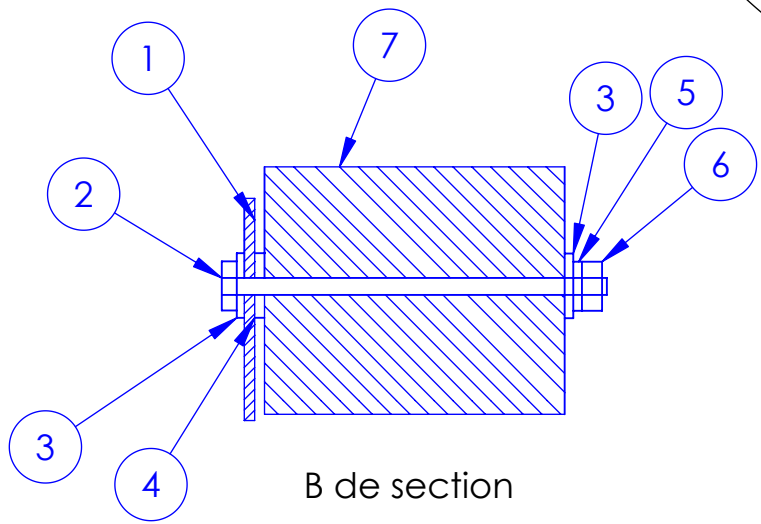
REV	DATE	ENG APPR.	DESCRIPTION

Toit de caravane



La Visage de Devant de caravane

Obtenir le Tourbillon à l'utilisation de mur de caravane 6" boulons. Appliquer la rondelle de caoutchouc autour du trou de boulon dans le mur de caravane. 6 Endroits.



B de section

Détailler A
ECHELLE 1: 8

Article	Quantité	Partie #	DESCRIPTION
1	1	VTX103	Stabilisateur de tourbillon
2	6	SC216	5/16-18 X 6" Le Boulon de sort, l'Acier Inoxydable
3	12	WA223	Rondelle plate 5/16" l'Acier Inoxydable
4	6	WA203	rondelle de caoutchouc, 5/16"ID, 1"OD
5	6	WA214	Verrouiller la Rondelle 5/16" ID SS
6	6	NU205	Noix de sort, 5/16-18 l'Acier Inoxydable
7	1		Le mur de devant de caravane

UNLESS OTHERWISE SPECIFIED:		NAME	DATE
DIMENSIONS ARE IN INCHES		DRAWN	J HAWS 1/12/07
TOLERANCES:		CHECKED	J HAWS 1/12/07
FRACTIONAL ±		ENG APPR.	
ANGULAR: MACH ±0.5 BEND ±		MFG APPR.	
TWO PLACE DECIMAL ±0.01		Q.A.	
THREE PLACE DECIMAL ±0.003		COMMENTS:	BREAK SHARP EDGES 0.02X45 Deg.
INTERPRET GEOMETRIC TOLERANCING PER:			
MATERIAL			
FINISH			
DO NOT SCALE DRAWING			

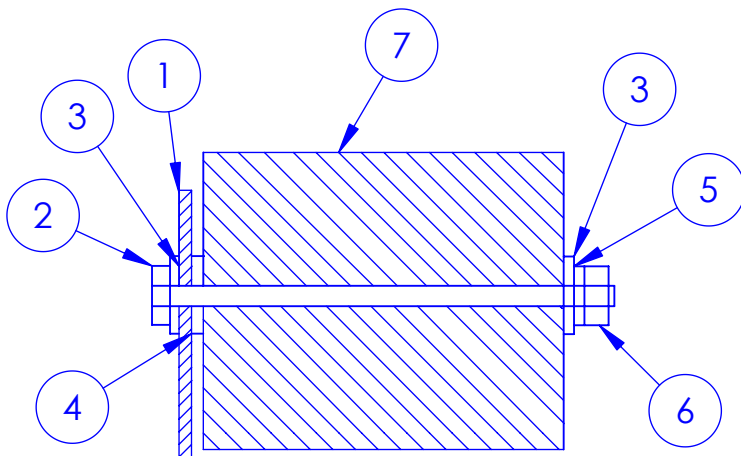
Titre:
L'Assemblée de Caravane de Stabilisateur de Tourbillon

SIZE	DWG. NO.	REV
A	LCL 9102-103-002-F	0

PROPRIETARY AND CONFIDENTIAL
THE INFORMATION CONTAINED IN THIS DRAWING IS THE SOLE PROPERTY OF LAYDON COMPOSITES LTD. ANY REPRODUCTION IN PART OR AS A WHOLE WITHOUT THE PRIOR WRITTEN PERMISSION OF LAYDON COMPOSITES LTD. IS PROHIBITED.

VTX103 Les Instructions d'Assemblée de Stabilisateur de tourbillon

1. Le Stabilisateur de Tourbillon devrait être installé comme ferme à la ligne centrale de la visage de devant de caravane comme possible. Ce peut être nécessaire de reloger les pancartes de sûreté.
2. Placer le Tourbillon contre la visage de caravane de devant, tel que la plus grande fin inclinée est comme ferme au toit de caravane comme possible. L'utilisation des trous de pré-entraîné comme un gabarit, un exercice par la visage de caravane. Insérer deux 6" boulons de sort pour tenir le Tourbillon en place.
3. Tirer le Tourbillon loin du mur de caravane et placer l'enfonce automatiquement la rondelle de caoutchouc autour du trou dans la visage de caravane. Insérer le 6" boulon de sort par la rondelle de pare-chocs, le Tourbillon et la caravane emprisonnent. Placer une rondelle de pare-chocs, la noix de rondelle frein et sort sur le boulon. Ne Pas Resserrer. Répéter pour l'autre cinq boulons.



Article	Quantité	Partie #	Description
1	1	VTX103	Stabilisateur de tourbillon
2	6	SC216	5/16-18 X 6" Le Boulon de sort, l'Acier Inoxydable
3	12	WA223	Rondelle plate 5/16" l'Acier Inoxydable
4	6	WA203	rondelle de caoutchouc, 5/16"ID, 1"OD
5	6	WA214	Verrouiller la Rondelle 5/16" l'Acier Inoxydable
6	6	NU205	Noix de sort, 5/16-18 l'Acier Inoxydable
7			Le mur de devant de caravane

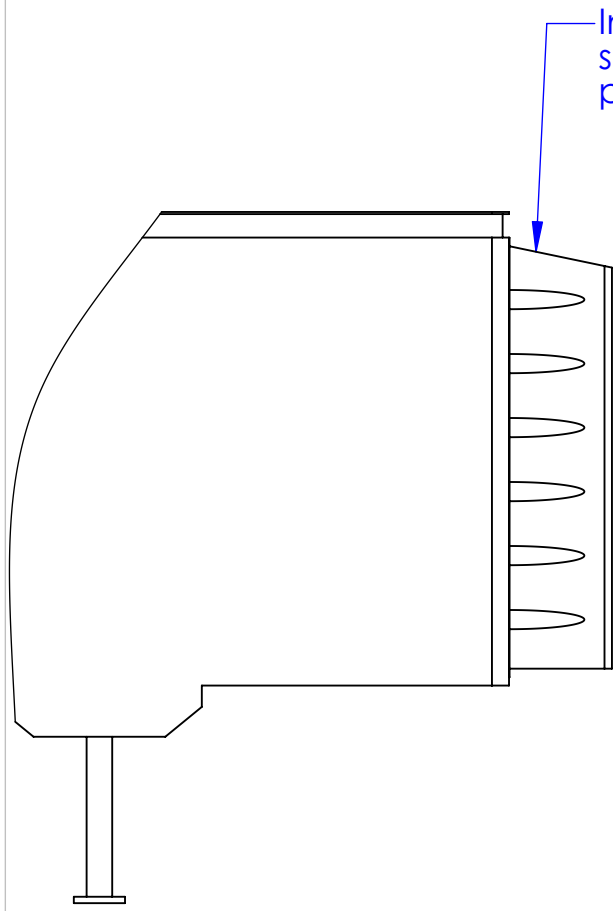
4. Resserrer toutes noix de sort à 20 - 25 pied-martele de moment de torsion.

Laydon Composites Ltd.
2109 Wyecroft Road
Oakville, ON L6L 5L7
Canada

TEL: 905-829-9200
FAX: 905-829-9701

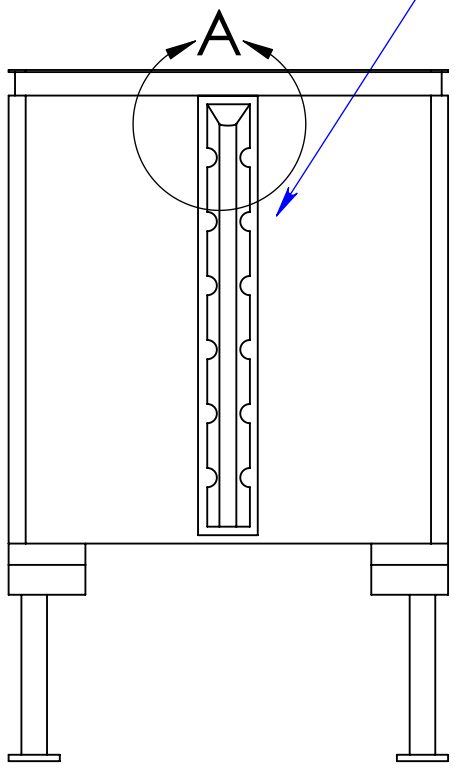
Instructions d'assemblée VSPA581

REV	DATE	ENG APPR.	DESCRIPTION



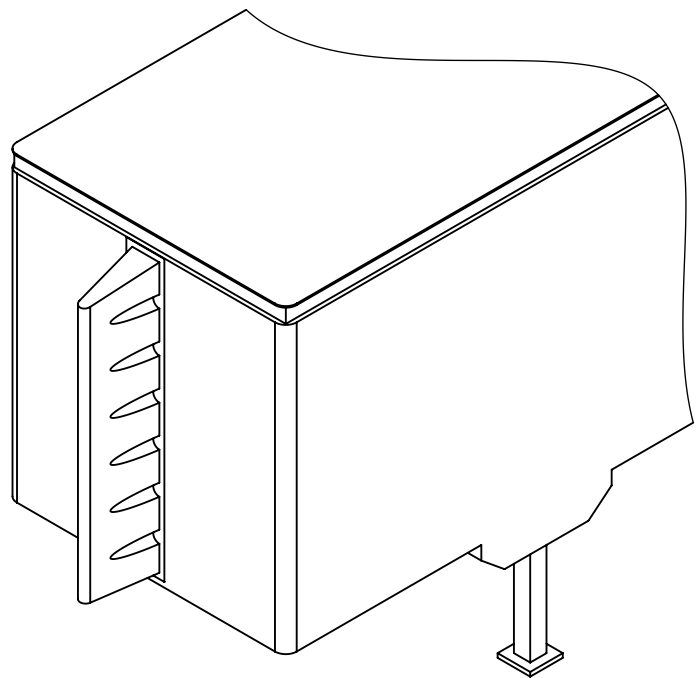
TRAILER SIDE VIEW

Install vortex with greater sloped end as close as possible to the trailer top.



TRAILER FRONT VIEW

Install Vortex to front face of Trailer. Center Vortex as close as possible.



ISO VIEW

UNLESS OTHERWISE SPECIFIED:

DIMENSIONS ARE IN INCHES
 TOLERANCES:
 FRACTIONAL ±
 ANGULAR: MACH ±0.5 BEND ±
 TWO PLACE DECIMAL ±0.01
 THREE PLACE DECIMAL ±0.003

	NAME	DATE
DRAWN	J HAWS	1/12/07
CHECKED	J HAWS	1/12/07
ENG APPR.		
MFG APPR.		
Q.A.		

TITLE:
 VORTEX STABILIZER TRAILER ASSEMBLY

PROPRIETARY AND CONFIDENTIAL
 THE INFORMATION CONTAINED IN THIS DRAWING IS THE SOLE PROPERTY OF LAYDON COMPOSITES LTD. ANY REPRODUCTION IN PART OR AS A WHOLE WITHOUT THE PRIOR WRITTEN PERMISSION OF LAYDON COMPOSITES LTD. IS PROHIBITED.

INTERPRET GEOMETRIC TOLERANCING PER:
 MATERIAL
 FINISH
 DO NOT SCALE DRAWING

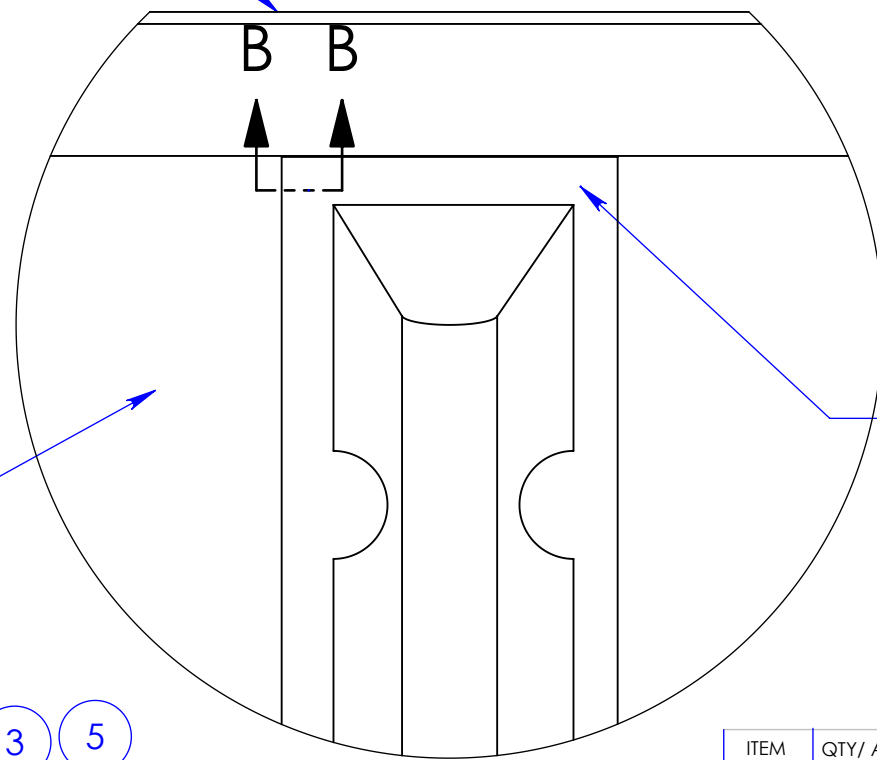
COMMENTS:
 BREAK SHARP EDGES 0.02X45 Deg.

SIZE A	DWG. NO. LCL 9102-103-002	REV 0
SCALE: 1:75		SHEET 1

REV	DATE	ENG APPR.	DESCRIPTION

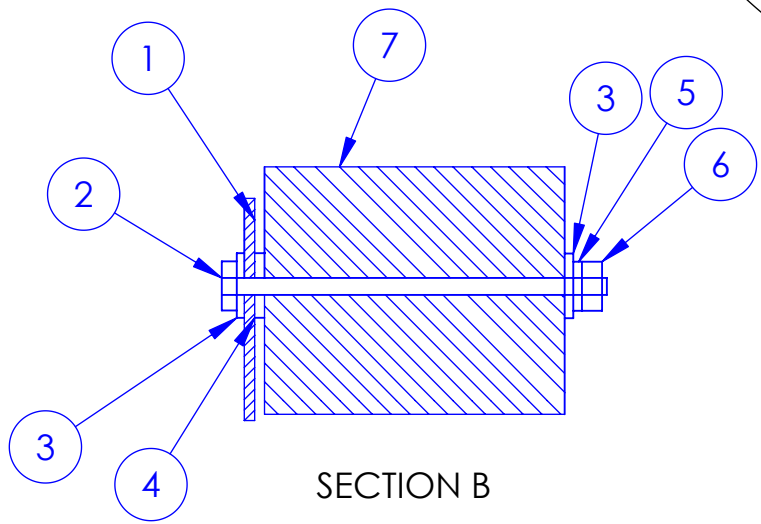
Trailer Roof

Trailer Front Face



Secure Vortex to trailer wall using 6" bolts. Apply self-stick rubber washer around bolt hole in trailer wall before bolting Vortex. 6 Places.

DETAIL A
SCALE 1 : 8



SECTION B

ITEM	QTY/ ASSY	PART #	DESCRIPTION
1	1	VTX103	VORTEX STABILIZER
2	6	SC216	5/16-18 X 6" HEX BOLT SS
3	12	WA223	WASHER, FLAT 5/16" ID SS
4	6	WA203	RUBSTICK WASHER, 5/16"ID, 1"OD
5	6	WA214	WASHER, LOCK 5/16" ID SS
6	6	NU205	NUT, 5/16-18 HEX SS
7	1		TRAILER FRONT WALL CROSS SECTION

UNLESS OTHERWISE SPECIFIED:		NAME	DATE
DIMENSIONS ARE IN INCHES TOLERANCES: FRACTIONAL ± ANGULAR: MACH ±0.5 BEND ± TWO PLACE DECIMAL ±0.01 THREE PLACE DECIMAL ±0.003	DRAWN	J HAWS	1/12/07
	CHECKED	J HAWS	1/12/07
	ENG APPR.		
	MFG APPR.		
INTERPRET GEOMETRIC TOLERANCING PER:	Q.A.		
MATERIAL	COMMENTS:		
FINISH	BREAK SHARP EDGES 0.02X45 Deg.		
DO NOT SCALE DRAWING			

TITLE: VORTEX STABILIZER TRAILER ASSEMBLY		
SIZE A	DWG. NO. LCL 9102-103-002	REV 0
SCALE: 1:100		SHEET 2

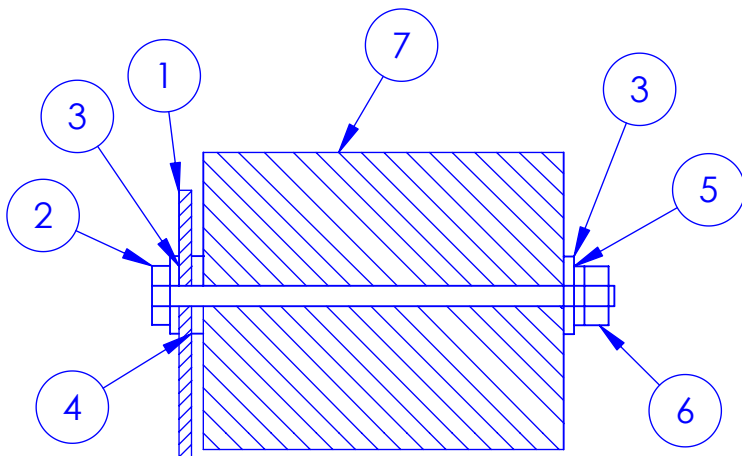
PROPRIETARY AND CONFIDENTIAL
 THE INFORMATION CONTAINED IN THIS DRAWING IS THE SOLE PROPERTY OF LAYDON COMPOSITES LTD. ANY REPRODUCTION IN PART OR AS A WHOLE WITHOUT THE PRIOR WRITTEN PERMISSION OF LAYDON COMPOSITES LTD. IS PROHIBITED.

VTX103 VORTEX STABILIZER ASSEMBLY INSTRUCTIONS

1. The Vortex Stabilizer should be installed as close to the centerline of the front trailer face wall as possible. It may be necessary to relocate safety placards.

2. Place the Vortex against the front trailer face such that the more greater sloped end of the vortex is as close to the trailer roof as possible. Using the pre-drilled holes as a template, drill through the trailer face. Insert two 6" hex bolts to hold the Vortex in place.

3. Pull the Vortex away from the trailer wall and place the self-stick rubber washer around the hole in the trailer face. Insert the 6" hex bolt through the fender washer, Vortex and trailer wall. Place a fender washer, lock washer and nut on the bolt. Do Not Tighten. Repeat for the other five bolts.



Item	Qty	Part #	Description
1	1	VSPA581	Vortex Stabilizer
2	6	SC216	5/16-18 x 6" Hex bolt SS
3	12	WA223	5/16 Fender washer SS
4	6	WA203	Rubber washer, 5/16 ID, 1 OD
5	6	WA214	5/16 Lock washer SS
6	6	NU205	5/16-18 Hex nut SS
7			Trailer Front wall cross section

4. Tighten all nuts to 20 - 25 ft-lbs of torque.

Laydon Composites Ltd.
2109 Wycroft Road
Oakville, ON L6L 5L7
Canada

TEL: 905-829-9200
FAX: 905-829-9701

Assembly Instructions VSPA581